



Companions on the Journey

St Andrew's Catholic Primary School
60 Victorsen Parade, Clarkson WA 6030
Phone: (08) 6206 4100 Fax: (08) 6206 4101



<https://www.facebook.com/standrewscps/>

NEWSLETTER NO 1 2022

3rd FEBRUARY 2022

PRAYER OF ST ANDREW



Loving God,
As the community of St. Andrew
we thank you for your guiding hand
and ask for your continued blessings upon us.
May our school be a place where we value truth,
justice,
kindness and the special gifts of one another.
May we have the strength and commitment
to meet life's challenges,
with St Andrew as our guide.
AMEN.

Dear Parents,

A **warm welcome** is extended to all families upon their return to St Andrew's Catholic Primary School for 2022. The school year has commenced smoothly as can be expected and thanks are expressed to all those concerned in working so hard for a positive start for the students. The priority at the moment is of course to remain safe and well – both physically and emotionally.



We offer our prayers to all people within our families and communities, who have been affected by the recent covid outbreaks, floods and fire tragedies and events. It is by our conscious unification that we can work together to overcome these adversities. (In the case of a future lockdown, our teachers have started preparing for the possibility of a move to remote learning, should the need arise.) **It is essential that you have provided your child's teacher with your contact details and have signed onto seesaw.** Please do this urgently, if you have not already.

Apologies for the length of this newsletter but it was discussed that the more information, as early as possible, the better.

We have completed a number of changes to our school's social media, whereby the school will be using the following platforms:



SCHOOL FACEBOOK PAGE Please follow and like us on Facebook <https://www.facebook.com/standrewscps/> (as well as a **P&F Facebook Page**),



School website, www.standrews.wa.edu.au



SEQTA Engage which will assist you in obtaining your child's report and other information.



You should also note that the **whole school will be using SEESAW**, from Kindy to Year 6. Invitations were sent home this week to those parents who were not connected.



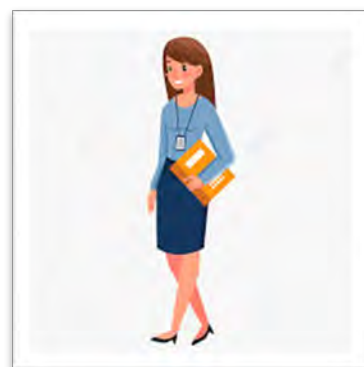
To access the 'Connected' App, please use the school password: **Companions1996** (Capital C.)

A **separate note has been sent home with all of the details** and we ask you to ensure that you have put the information into your devices for ease of contact and information. If you require any assistance with any of these, then please speak to Mr Redding directly, who will help you.

STAFFING

I warmly welcome back Mrs Joanne Rapinese. Mrs Rapinese will work on a Monday and Tuesday in Year 2, in conjunction with Mrs Allen. Mrs Rapinese has been on Parental Leave and has worked at our school previously to that for approximately 10 years. We welcome Joanne.

Parents should also note that a number of staff have changed positions for this year, and we wish them excitement as they commence their new roles for 2022. To our new staff members, we wish a long and rewarding career at St Andrew's and I know that all of the children and parents will make you both feel very welcome.



ST ANDREW'S SCHOOL ADVISORY COUNCIL 2022

A sincere thank you to the following parents, who have committed to be on the 2022 Advisory Council. I appreciate their generosity of giving and time to assist in the work that our school does.

Chair: Mrs Mel Boschin

Co Vice Chairs: Mr Kurt Graham & Mr Bradley Hyde

Secretary: Mrs Adele Baker

Treasurer: Mrs Krystina Stroppek

Priest: Fr Darek

Parish Rep: Mrs Adele Baker

P & F Rep: Mrs Katie Canzirri

Principal: Mr Sam Fontaine

Staff Representatives (Assistant Principals): Mr Fintan Archer, Mrs Alison Campbell



ST ANDREW'S SCHOOL PARENTS AND FRIENDS ASSOCIATION FOR 2022

The School's P&F are a committed group of parents who are so willing to give and enjoy engaging in the social aspects of the school. Fundraising is kept to the bare minimum and is offered as an opt in or opt out. All parents are welcome to attend any meeting and join the P&F during the year. Come along and enjoy becoming involved with your child and their school.

President: Mrs Katie Canzirri

Vice President: Mrs. Melissa Morris

Treasurer: Mrs Krys Stroppek

Secretary: Mrs Joanne Webber

Committee: Emily Wesley, Vanessa Neave, Tania King, Kylie Jones

Principal: Mr Sam Fontaine

Staff Representatives (Assistant Principals): Mr Fintan Archer, Mrs Alison Campbell



I ask all parents to please be aware of the classroom dynamics and understand that if your **child is late to class that it is both disruptive to the other students and the teacher.** I have instructed all teachers that they must continue and maintain the flow of the lesson during any late drop off or collection. This time is not appropriate for a teacher interview but obviously a short explanation may also be required.

I **thank the staff** for all of their dedicated work over the school vacation period and the very productive meetings and workshops that were held at the end of last week. A number of positive new initiatives will be developed at the school, which will further enhance the partnership between parents and staff in the education of their children.

At the end of January, the staff have completed Code of Conduct, School Vision for learning, Transformation, Religious Education, Evangelisation, School Improvement Plan, School Strategic Plan, School Policies, Anaphylaxis Training, Professional Development and Workshop Sessions. I also wish to thank the staff for their dedication, as ALL **STAFF MEMBERS** attended school, prior to the last couple of professional development days, to set up their rooms, ensure that their learning areas roles, etc were ready for the children on their first day. It is a very complex task for all involved to start the new school year!

Please be aware of the new and **revised Term One dates**, which are included with today's newsletter. Subtle changes have occurred to the list that was sent home at the end of last year, due to reasons beyond our control. Thank you for understanding.

Please be aware of the following changes to event dates throughout the year, which have occurred for reasons beyond our control.

Eucharist Retreat – Now Monday 1st April – St Andrew's School Hall

Summer Lightning Carnival – Now Thursday 10th March (Kingsway Sporting Complex)

Winter Lightning Carnival – Now Thursday 9th June (Kingsway Sporting Complex)

Interschool Sports Carnival – Now Thursday 27th October (Kingsway Sporting Complex)

P & F Meeting – Monday 28th March – 8:30am Staffroom

SCHOOL PHOTOS – Now Tuesday 31st May

Playgroup morning – Tuesday 31st May – venue to be moved away from school hall

Much has happened over the school holidays to minimise the disruption to the students including, painting, upgrade of internal and external lighting, reticulation, pruning of shrubs, cleaning of all internal and external walls, spider removal, white ant treatment, new shade sails, purchase of new reading resources, purchase of new classroom resource and new items in the nature scape playground (kindly donated by the P&F)





SEASONS FOR GROWTH

Loss at any time can be challenging. We recognize that when changes occur in families through separation, divorce, bereavement or other loss experiences, young people may benefit from learning how to make sense of these changes. To support our children and young people, we are offering an evidence-based education program called Seasons for Growth. Seasons for Growth is a small group program that supports children and young people to learn change is a part of life, naming and caring for feelings, problem-solving, making good choices and developing support networks. The children will attend the weekly session of 30-40 minutes for eight weeks, concluding with a 'Celebration' session. Each child is given a journal, supplied by the school, to record their experience and learning during the program.



Participation in the program is voluntary and we encourage you to talk to your child about taking the opportunity to join the program. Sr Wendy 'companions' the group and if you would like more information, please contact the school either Mondays or Tuesdays. The program will commence later this term.

WELCOME TO THE FOLLOWING NEW STUDENTS (AND FAMILIES)



Pre PB	Tyson G	Charlotte Mc
Pre PW	Gabrielle J	
Year 1B	Michael M	
Year 1W	Liam F	Riley M-J
Year 2B	Sehbaaz S	Julius P
Year 2W	William F	Oran Mc
	Shravan S	Julian P
Year 3B	Luke F	
Year 4B	Aditthep K	Mannat K
Year 4W	My An (Merry) N	
Year 5B	Piper H	



STUDENT TERM DATES FOR 2022

Term 1	Monday 31 st January – Wednesday 6 th April (Thursday 7 th & Friday 8 th April – PUPIL FREE DAYS - Staff religious Retreat) <i>Easter falls within the middle weekend of the school holidays this year.</i>
Term 2	Tuesday 27 th April – Thursday 30 th June (Monday 26 th April – Anzac Day – Public Holiday)
Term 3	Tuesday 19 th July – Friday 23 rd September (Monday 18 th July – Pupil Free Day)
Term 4	Tuesday 11 th October – Friday 9 th December (Students Ys PP - 5) (Monday 10 th October – Pupil Free Day) Wednesday 7 th Dec - Year 6 (Last day) Tuesday 6 th Dec – Kindy (Last day) Friday 16 th December (Staff)

PUPIL FREE DAYS AND DESIGNATED PUBLIC HOLIDAYS – 2022

These will be the Pupil Free Days in 2022. **Thursday 7th April, Friday 8th April, Tuesday 7th June, Friday 1st July, Monday 18th July and Monday 10th October.** (KINDY ONLY – Tuesday 8th November) The Staff will be involved in Professional Development on these days with regards to Religious Education, Literacy and Numeracy and Reporting.

Designated **Public Holidays occur on Monday 7th March, Monday 25th April, Monday 6th June.**

PARENT SACRAMENTAL NIGHT 2022

Any parents, who have a child, or children, making the Sacraments (Penance, Holy Communion or Confirmation) in 2022 are invited to attend a one only parent information evening. This will be held on ***Wednesday 16th February at 6:00pm and will be held in the Parish Church.*** Please book this date into your diaries and we look forward to seeing you all in attendance.



2022 BEGINNING OF THE YEAR SCHOOL SOCIAL FUNCTION THIS FRIDAY



Put ***THIS Friday 4th February 2022*** into your diaries for the St. Andrew's School Community welcome back function – Adventure "An Evening on the Green" - afternoon on the school oval. There is no charge for this function, and all are welcome to attend. 4:00 - 6:30pm.

YEARS 1– 5 (2022) – SWIMMING LESSONS

The students in Years 1 – 5 in 2022 will be completing their Swimming lessons at State Swim Joondalup. Lessons will be conducted from Monday 21st March – Thursday 31st March inclusive. New venue – State Swim Joondalup. (Any questions, please speak to Mr. Waddell directly.)

Lessons will need to be paid for before they commence.



ASSEMBLIES 2022 – FRIDAY MORNINGS

Assemblies will be held on ***FRIDAY mornings***, in the school hall, commencing at 8:40am sharp in 2022. Please look at the term dates and the newsletter for further details. Our current advice remains whereby both classes in each grade will present a combined assembly this year, with the exception of the Pre-primary classes. We thank you for your understanding in this matter.

YEAR 6 CAMP / GRADUATION AND OTHER CHARGES

Parents of children who are in Year 6 are reminded that the Year 6 School camp will be held from the 16th – 18th March inclusive. The cost must be paid prior to your child's attendance by the 23rd February. A number of initial expenses and deposits have already been outlaid and paid by the school. More information will be sent home by the Year 6 Teachers, as well as the information that was sent home last year, when your child was in Year 5.



PARENT VOLUNTEERS AT ST ANDREW'S – CODE OF CONDUCT

We sincerely appreciate all of those wonderful parents who assist the school in so many different and varying ways. With this being the case, ALL STAFF and VOLUNTEERS at our school will need to read and sign a CODE OF CONDUCT before working at our school. This form is available on our schools' website and hard copies are available from MRS CHAMPION. So please continue to help at our school but the first time that you come into assist, please allow enough time to read and complete the form at the front office. We appreciate your co-operation in this matter.



NUT FRIENDLY SCHOOL



A reminder to all families that St Andrew's School remains a **nut friendly school** and as such, children should not be bringing nut products to be consumed. Thank you for your on-going assistance in this matter as we have a number of children with severe nut allergies

STUDENT ACTION PLANS FOR ANAPHYLAXIS / ALLERGIC REACTIONS

Any student who requires an action plan for either Anaphylaxis or Allergic Reactions will need to complete a new Action Plan form, complete with current coloured photo and consultation with your family doctor and hand it into the front office the first day back next year. Please do not assume that if you have completed one of these forms before that it will suffice. Each year a new and updated form must be submitted to the school according to government legislation. Thank you for your co-operation in this matter.



INSTRUMENTAL MUSIC TUTION

ANY FAMILY considering whether to participate in the school's music tuition program are asked to collect a form directly from Mrs Mulholland ***Please ensure that all forms are submitted by THIS FRIDAY 4/2/22.***



SCHOOL PHOTOS – CHANGE OF DATE

2022 School Photos will be held on **TUESDAY 31st MAY.**

TERM DATES

A **revised** full list of this term's dates has been placed on the school website for your convenience.

EXCURSION PERMISSION NOTE

All children will have individually signed excursion notes for all excursions they attend this year. Without a returned signed permission slip, your child will not be able to attend the excursion and will unfortunately remain at school.

MINISTRY ANNOUNCEMENTS

All year 6 children have been placed into a Ministry as part of our Student Leadership model in 2022. The Ministries for 2022 are Communications, Cultural, Environmental, Library, Music, Spiritual and Sport. All ministries are designed to be of "service to others" and not in learning areas.

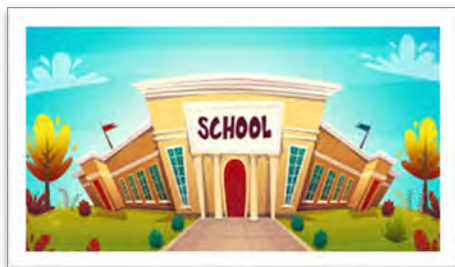
The formal announcement and presentation of the badges was held today at our Welcome Back Mass. The children's badges were blessed by Father and then each child recited an Act of Commitment.



OUT OF SCHOOL CARE, BEFORE AND AFTER SCHOOL CARE

If any parent requires the use of this service, OSHClub works with students at St Andrew's School and offers care at our school. Full details can be obtained by calling 9261 3200.

SCHOOL STARTING AND FINISHING TIME FOR PP-YEAR 6



School commences at 8:30am and finishes at 2:45pm. (Between 8:20 - 8:30am each morning there is meet and greet in the classrooms.) Parents are urged to ensure that their children are at school on time and collected promptly. All children not collected on time are required to be sitting outside the front office. It saddened me at the end of last year that some children were not picked up until very late. This is unacceptable and parents need to make alternative arrangements. Thank you for your co-operation in this matter.

We are fortunate to have OSHC onsite for your convenience.

KINDERGARTEN

Term 1 – Term 4

Meet and Greet

8:20am – 8:30am

School Start:

8:30am – 2:30pm

PRE-PRIMARY – YEAR 6

Meet and Greet

8:20am – 8:30am

School Start:

8:30am

Sip N Crunch

10:15am – 10:25am

Morning Recess

10:25am – 10:40am

Lunch

12:20pm - 1:05pm

End of School

2:45pm



TEACHER'S DUTY

Please note that teachers are on duty until 3:00pm. If you are unavoidably late, please contact the school and collect your child from outside the Office.

PLAYGROUND BEFORE & AFTER SCHOOL



Parents are reminded that the children are unable to play on the equipment before and after school due to injury, supervision and insurance concerns. Please supervise your children and inform them of this. Thank you for your support.

STUDENT ABSENCE

A written note from parents or guardians are required for **ALL STUDENT ABSENCES.**

KISS AND RIDE AFTER SCHOOL PICK UP OF STUDENTS

To make life a little easier in the car park after school we are asking all families to **write their surname in large black capital letters on a piece of white card that will fit on the sun visor of your car.** When you enter the Kiss and Ride to pick your child up, we ask that you flip your sun visor down exposing your surname which will allow teachers to find your child, ensuring that the Kiss and Ride process runs smoothly.

DO NOT PARK OR GET OUT OF YOUR CAR whilst in the

Kiss and Ride. Car parking is available at other locations around the school and parking causes anxiety for all of the other parents who are following the correct procedure when using this service.



CHILDREN LEAVING OR RETURNING TO SCHOOL DURING SCHOOL HOURS

All parents must “sign out” their children when leaving the school during school hours. A book is located in the front office for this specific purpose. The procedure is as follows: Parents, upon arrival at school, must **first sign out their child** at the office and then collect them from their classroom. There is no deviation from this policy as we are required to know where the children are at all times.

When a child returns from an appointment, during school hours, the same procedure must also be followed. They are to be signed in at the office and then taken to the classroom.

A note is still required to cover the period of absence and should be given to the classroom teacher *before* the appointment if possible.

STUDENT ABSENCE DURING SCHOOL TERM TIME TO GO ON HOLIDAYS



Parents who remove their children, during normal school term time for a vacation, need to inform, the classroom teacher and the Principal, in writing.

St Andrew's Catholic Primary School does not support the withdrawal of children during important term teaching time for the purpose of vacations.

Should there be no alternative, please be aware that it is not the responsibility of your child's classroom teacher to prepare and correct work during this time.

Thank you for your understanding in this matter and I am personally happy to discuss this further with any parent, if required.

SACRAMENTAL PROGRAM FOR CHILDREN IN OLDER YEARS

Children who are new to the school or who are in older grades and have not participated in the sacraments that are offered through the parish / school and would like to participate this year, **will need to speak to Mr Archer urgently.**

Mr Archer would also like to hear from any students that would like to be **trained as Altar Servers** and those children, from within our school, that would like to be **baptised in the Catholic Christian faith.**

The following Sacraments include Penance / Reconciliation (usually Year 3); Holy Communion / Eucharist (usually Year 4) and Confirmation (Year 6). You need to see Mr Archer urgently so that you can enrol in the Sacraments and participate this year.

EARRINGS AND JEWELLERY

Parents are reminded as to what has been written in the school handbook. That is, only **one** sleeper or plain gold or silver stud is permitted in each ear for safety reasons. It is recommended that earrings are removed before sporting activities. Bangles, finger rings, body piercing and chains have proven to be dangerous and should be worn at home under parent supervision. Thank you for your co-operation in this matter.



HOMEWORK

Children, on many occasions, take work to do at home. This may range from a few pages of reading from a book to set assigned work. The key to a successful homework program is the parents' interest and support. Homework is an excellent opportunity for pupils to consolidate their skills learnt in class with the help of their parents. Homework may also be given for practise / revision /consolidation of work learnt in class or research for a topic being taught in class. Homework is set each night from Monday to Thursday but not on weekends, as a rule. (Some children may choose to do homework on the weekend and this is acceptable so long as it is the child's /parents' choice).

In Year 6, Homework **may take up to 45 minutes** to complete. However, this should not be the case in the younger grades (1 – 5). The following should be used **as a guide** for homework.

HOME WORK TIMES (Guide)

Year 1	15 mins
Year 2	15 mins
Year 3	15 - 30 mins
Year 4	15 - 30 mins
Year 5	30 - 45 mins
Year 6	30 - 45 mins

If your child is having trouble with their homework or the amount of time needed to complete it, please see the classroom teacher.

RING PULL CAN COLLECTION

Due to the enthusiasm and goodwill of our school community, St Andrew's were able to donate over 32kg of ring pulls to brother Ollie and his team of volunteers at **Wheelchairs for Kid Inc.** Since 1998, 45 844 wheelchairs have been made in the Wangara workshop and distributed to 90 different countries. Please keep collecting again throughout 2022 so we can contribute to this worthwhile cause again.

Mrs Karen Young and the Environmental Ministry.

UNIFORMS

All school uniform requirements can be ***PURCHASED ON-LINE***. The uniform shop is open on Fridays from 8.00am-9.00am, to try on for sizes.

Uniforms that are purchased on-line normally have a 48 hour turn around when delivered directly to your home.

Uniforms that are purchased and **sent to school for collection** are **delivered to school, once a week, on a Tuesday**. Collection is from the school administration and all orders need to be signed for as they are collected.

Use the link below to gather more information and order your school uniforms.

<https://standrewscatholicps.permapleat.com.au/shop/>

Second hand uniform donations are urgently accepted at the front office.

I have been informed that a number of families / children are having difficulties in purchasing and obtaining school uniforms. Please simply send a note to your child's classroom teacher to confirm this. Of course, we will support you until new uniforms are available but it is very reassuring to your child to have the written note. Thank you for your cooperation in this matter.

SECOND HAND UNIFORMS - WANTED



If any family has any second-hand uniforms that they no longer require or need and are willing to donate them to the uniform shop, please do so as soon as possible as we have a number of families that require and want second-hand clothing. These uniforms can be brought to the administration, given directly to Mrs Jaschinsky or handed into the uniform shop each Friday morning. We all appreciate your support.

SCHOOL SPORTS SHOES.

Please be aware that all sports shoes need to be **PREDOMINANTLY WHITE.**

SCHOOL FEES

School Fee accounts will be sent home shortly. *All families will receive an account, including those who have a direct debit. **All parents who have received discounts in the past will need to re-apply for fee assistance.*** All families using the Health Care Card discount will need to read the information that follows and attend the office personally. All other families who need fee assistance but are not on a Health Care Card or PPS Card will need to ***apply for fee assistance from Mr Fontaine by the end of February, or during the year as the need arises.*** Any concerns regarding fees should be directed to either Mr Fontaine or Mrs Rafferty, immediately for clarification.

ST ANDREW'S SCHOOL MADE A VERY CONSCIOUS EFFORT TO MINIMALLY INCREASE ANY FEES OR CHARGES FROM 2021 to 2022.

Parents **should ensure that all school fees are fully paid off during the school year of attendance.** Outstanding balances, from year to year, soon add up and need to be cleared. The outstanding amount may cause anxiety for parents who have not kept up their regular fee payments or adjusted their fee payments so that they can be paid off in the calendar year. If you have fee arrears, you need to pay an extra amount so that they are caught up and paid off. If you require assistance with this matter, then please speak directly with Mrs Rafferty immediately for clarification.

HEALTH CARE CARD UPDATE

As you are aware from the information presented in past newsletters and from the press, in 2022 Health Care Card Holders will be eligible for a reduction in school tuition fees. The Catholic Education Commission of Western Australia have made a decision to extend the Scheme making those PCC holders receiving a "Parenting Payment Single" payment – code PPS on the card eligible for the same concession as HCC holders. The CEO website www.ceo.wa.edu.au contains further information and parents can log on and follow the links. Alternatively, parents are welcome to book a confidential appointment with Mr. Fontaine to discuss their individual situation further. **If you are on a Health Care Card, then you need to fill in the form and present the original of your Health Care Card for copying to the front office, immediately.**

DIRECT DEBIT YOUR SCHOOL FEES AT NO CHARGE

The Catholic Development Fund is offering a service to parents of our school. This service will allow the CDF to collect fees and levies from parents through a means of direct debiting the parent's bank account directly and crediting the schools account at **no charge to parents.** Please see Mrs Rafferty immediately if you would like to use this service.

SUPPORT A READER

WANTED: ADULTS WHO HAVE A LOVE OF READING AND WANT TO SHARE THE JOY!

Support A Reader is a volunteer-based program that trains parents and members of the community as 'tutors' to give children, who need additional assistance with reading, the opportunity to read regularly with a supportive adult on a one-to-one basis. Tutors are trained to give explicit support to assist children's reading development.

We are seeking volunteers who may be interested in becoming tutors and could spare a small amount of time each week to work with children.

To become a tutor you will need to attend a one hour training session in the school library on **Monday 7th February**. If you are interested, please speak directly with Mrs Dennis (Student Support Teacher) or place your name at the office with Mrs Champion.



PARENT HELPERS AT ST ANDREW'S

As a staff, we enjoy and encourage parent assistance within the classrooms. However, parents should be aware of the following considerations. If you have any special skills or talents that you feel may be useful then please speak and liaise directly with your child's classroom teacher. Eg. artistic abilities, craft, drama qualifications, cooking skills to name but a few. If you are considering helping with the reading roster in your child's junior primary classrooms, then you should have completed the Support-A-Reader Professional Development run through the school which Mrs Jo Dennis is co-ordinating. Ultimately, your participation within any classroom, excursion or learning activity must be kept with the utmost discretion and **CONFIDENTIALITY** of the children that you work with. (Please be aware, all volunteers will need to meet vaccination requirements to carry out their duties).

CODE OF CONDUCT

All school staff have now been in-serviced on our Code of Conduct. The code applies to parents and visitors to the school as well.

Specifically, to follow this Code of Conduct at St Andrew's School as a parent, particularly when volunteering at the school, you need to abide by everything outlined in this document, particularly the following points:

1. The safety and protection of students in every way is the ultimate purpose of this Code.
2. Parent volunteers need to respect confidentiality. For example, if you listen to a child read, you should not be commenting on their reading level to other parents. Each

child's academic achievement will be at their own rate. Privacy and respect are paramount.

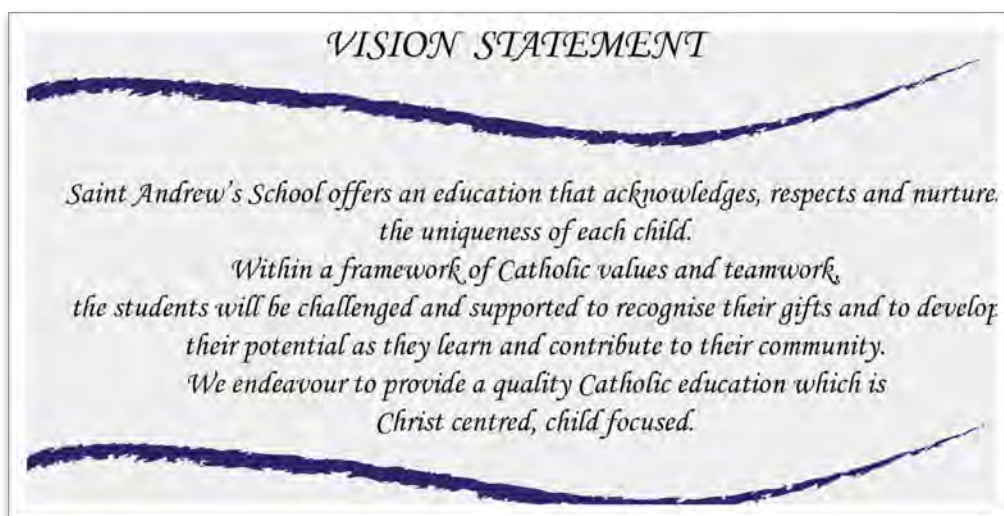
3. Parents/Guardians should not raise issues via social media platforms or allude to the school in any way, name the school or name staff. This is not best practise for resolving problems/ issues.

This information and more can be found on the full version of the document which can be located on the school website.

If you come into the school as a volunteer at any time in the future, you will have to sign a statement to declare that you have read and understood this document prior to working in the school.

May God Bless You All,

Sam Fontaine
PRINCIPAL



KISS N RIDE

Please place your child's family surname to a card and attach the card to the front passenger side visor of their car.

Parents are asked to have this 'family Name' card fully visible as they drive through the Kiss N Ride. This will allow the Duty Teacher at Gate 3 to call children to the Gate in a timely manner, thus assisting traffic flow.

We ask that every family using the Kiss N Ride use the 'Family Name' card immediately.

Please read the following traffic guidelines. They are in place for everyone's safety.

- There is no entry to the main school entrance from the SOUTH.
- Kiss and Ride now fills from the north end through the main entrance only. Keep moving forward as cars ahead of you leave.
- The Kiss and Ride car park is a one-way system only. NO REVERSING.
- The Kiss and ride is on the western side of the car park. You may not leave your vehicle in this area at the designated times.
- Parking is on the eastern side of the car park – bays are marked on the bitumen.
- There are three ACROD bays beyond the kiss and ride. These are to be used only if you have the correct ACROD sticker.
- Note the line marking on the bitumen at the exit from the kiss and ride car park. Two lanes – one a left turn and one a right turn.
- Do not block the entrance to the school kiss and ride. If the kiss and ride is full, you need to drive through the car park and re - enter it.
- Do not block through traffic on Victorsen Parade.
- **DO NOT GET OUT OF YOUR CAR OR PARK YOUR CAR**
- Drive south to the roundabout and re – enter, through the main entrance.
- Gate 1 is the access gate from the north (Anthony Waring direction). OSH Club families need to use this gate, along with families who have parked at Anthony Waring Oval
- Gate 2 is for families using the ACROD Parking Bays only.
- Gate 3 is for Kiss and Ride children and parents leaving with their children.
- Parents who park in the car – park near the hall should use Gate 4.
- Gate 4 is for children and parents whose vehicles are parked near the Hall or at the Church or who are walking / riding south. This car park is only accessible from the driveway nearest the roundabout on Victorsen Parade and Belleville Gardens. Bollards and a chain block a northern exit from this car park between 7.00am and 3.30pm each school day.
- Oval gate is for children who live west of the school. We recommend that children in Years 4, 5 or 6 use this exit. They are dismissed to parents by the duty teacher until 3pm.
- THE SCHOOL RECOMMENDS that where possible, parents park in the Anthony Waring car park (93 bays) or Church car park and older children can walk to and from school.
- Children are supervised at the gates until 3.00pm. You don't have to be at school at 2.45pm on the dot!
- ***Please be patient and considerate to all.***

Dear Parents/Guardians,

As part of our school's commitment to reducing our waste to landfill, we are aiming to become a waste-free school in 2022. This is a new initiative and the children are encouraged to bring waste-free lunchboxes for Crunch 'n' Sip and lunch or take their rubbish home.

As this is a new initiative, over the coming weeks, the children will be supported and guided through this process. Watch out for helpful hints and tips in the newsletter and on Seesaw.

WHAT IS A WASTE FREE LUNCH BOX?

A waste-free lunch contains no throwaway packaging and produces no food waste. The typical waste-free lunch is packed in a reusable lunchbox or bag. Food is put in reusable containers rather than wrapped in disposable packaging. A drink is in a refillable bottle and all containers are resealable so that leftover food and drink can be saved for later.

Australia is one of the highest producers of waste per person in the western world. The average student's lunch generates around 3 kg of waste per school year. If you consider the impact of the collective lunches of your family, that's a lot of waste. But with your assistance, we can make a great contribution towards avoiding waste. By helping your child pack a waste-free lunchbox you will help fulfill a number of goals:

- Learn about waste avoidance and recovery, including reuse and recycling.
- Reduce the 13 million tons of lunch waste currently going to landfill in Australia.
- Reduce the cost of waste disposal so the school's resources can be put to better use.
- Minimise litter around the school due to less waste becoming litter.
- Encourage healthy eating by avoiding prepackaged foods which tend to be high in fats, sugar, sodium and artificial ingredients.
- Help you save money – an average waste-free lunch can save you \$10.50 per week or \$397.50 per year per child.

Please see below for tips on creating a waste-free lunchbox, including examples of the types of containers you could use. Thank you for supporting your child's participation in our school waste and sustainability program.

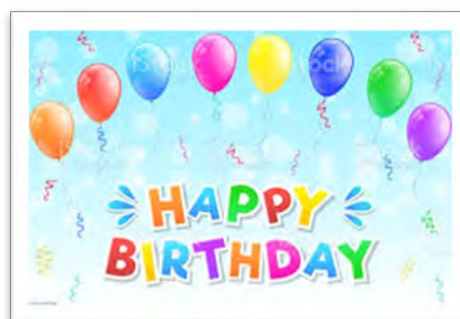
Sincerely,

The Waste Wise Committee



Tips for parents

- Use a reusable lunch bag or box for carrying lunch. There is a non-disposable alternative for every item you can imagine making your waste-free lunch a breeze.
- Put food in reusable containers instead of wrapping in plastic wrap.
- Put drinks in refillable containers.
- Label all containers to make sure they come home.
- Let children help pack their own lunchbox and help them to make it nutritious and waste-free.
- Only pack as much food as your child will eat.
- Buy in bulk – food such as crackers, chips, biscuits, yoghurt, cheese or other small, packaged food is much cheaper bought in bulk and put into reusable containers, and creates a lot less waste.
- Stock up on easy-to-pack, healthy foods, such as fresh fruits, vegetables and wholegrains.
- Cut up fruit and vegetables and pack them in reusable containers so that any uneaten can be saved for later.
- Put leftovers from dinner directly into a lunch container.
- Minimise the morning rush by packing lunches the night before and leave in the fridge overnight. Cut up a few extra vegetables.



Happy Birthday to
Lucca d'A, James H, Sophia C, Ryan W, Florence Mc,
Huxley S and Tessa C

STAFF FOR 2022

Principal: Mr. Sam Fontaine
Senior Office Administrator: Mrs. Monique Champion
Support Office Administrator: Mrs. Jacinta Puca
Bursar / Finance Officer: Mrs. Muzzie Rafferty
Assistant Principal: Alison Campbell
Assistant Principal: Mr. Fintan Archer
Parish Priest: Fr Darek
Assistant Parish Priest: Fr. Marian
Advisory Council Chairperson: Mrs. Mel Boschin
Parents and Friends President: Mrs. Katie Canzirri
Kindergarten: Mrs. Rachel Scaf
Kindergarten Teacher Assistants: Mrs. Mary Harvey / Mrs. Jacinta Puca
Pre-Primary Blue Teacher: Mrs. Mrs. Kim Kilgallon
Pre-Primary Blue Teacher Assistant: Allyson Wilson
Pre-Primary White Teacher: Mrs. Sarah Zjacic / Mrs. Bianca Whitaker
Pre-Primary White Teacher Assistant: Mrs. Claire Morgan
Year 1 Blue: Mrs. Susana Lo Faro
Year 1 Blue Teacher Assistant: Mrs. Nikki Jaschinsky
Year 1 White: Mrs. Sandra Brown
Year 1 White Teacher Assistant: Mrs. Caroline Quintal
Year 2 Blue: Mrs. Joanne Rapinese / Mrs. Brooke Allen
Year 2 White: Mrs. Gabby Parrotte
Year 2 Teacher Assistant: Mrs. Sara Hamilton
Year 3 Blue: Mrs. Karen Young
Year 3 White: Mrs. Danielle Wildman
Year 3 Teacher Assistant: Mrs. Iwona Kazmierczak
Year 4 Blue: Mrs. Lisa Walsh
Year 4 White: Mrs. Annette Parata
Year 5 Blue: Mrs. Donna Troman
Year 5 White: Mr. Fintan Archer / Mrs. Michelle Forzatti
Year 6 Blue: Mr. Michael Bartucciottto
Year 6 White: Mrs. Lisa Stokes / Mr. Zac Waddell
Learning Support Teaching Assistant: Mrs. Julie Holden / Mrs. Nikki Jaschinsky / Mrs. Caroline Quintal / Mrs. Marina Deans / Mrs. Rae Connolly
Aboriginal TA: Ms. Nikeisha Vinciguerra
Library Assistant: Mrs. Danielle Baldock / Mrs. Anne O'Connell (Book exchange)
Music Teacher: Mrs. Clare Mulholland
Support Teacher K – 3: Mrs. JoAnn Dennis / Mrs. Alison Campbell
Support Teacher: 4– 6: Mrs. JoAnn Dennis / Mrs. Alison Campbell
SWD Coordinator: Mrs. Alison Campbell
Literacy Support Staff: Mrs. JoAnn Dennis / Mrs. Danielle Baldock / Mrs. Rae Connolly
Maths Support Teacher: Mrs. Alison Campbell
Junior Primary Support Staff: Mrs. Erin McLoughlin / Mrs. JoAnn Dennis / Mrs. Bianca Whitaker
ELYF Coordinators: Mrs. Sarah Zjacic & Mrs. Kim Kilgallon
Senior Phys Ed Specialist: Mr. Zac Waddell
Early Childhood Phys Ed Specialist: Mr. Zac Waddell
Curriculum Enrichment Teacher: Mr. Shannon Redding
STREAM Specialist Teachers: Mrs. Melissa Di Cesare / Mr. Shannon Redding / Mrs. Erin McLoughlin / Mrs. Bianca Whitaker
Technology Specialist: Mr. Shannon Redding
LOTE Teacher: Mrs. Natalie Belcastro
Literacy Pro Program Teacher Assistant: Mrs. Danielle Baldock
Playgroup Leaders: Mrs. Vanessa Neave / Mrs. Nicole Callaghan
Pastoral Care Worker / Chaplain: Sr. Wendy
N.G.S.P.S. Support: TBA
Uniform Shop: Mrs. Nikki Jaschinsky
Canteen: Mrs. Maria Cross

ST ANDREW'S CATHOLIC PRIMARY SCHOOL
TERM 1, PLANNER 2022 – PARENTS (10 week term)

SAT/SUN	MONDAY	TUESDAY	WEDNESDAY	THURSDAY	FRIDAY
CAMPION BOOK SHOP - SACPS Hall Thurs 13 Jan 9 – 5 ONLY	24 JANUARY School Office opens	25 JANUARY New staff induction 10am (Fintan)	26 JANUARY ASUTRALIA DAY PUBLIC HOLIDAY	27 JANUARY Staff resume 8:45am Professional Development Day Commissioning Mass 4:30pm	28 JANUARY Staff Meeting Professional Development Day
29/30 JAN Week 1	31 JANUARY First day of school - students P & F Meeting 8:30am at drop-off - Staffroom	1 FEBRUARY Staff Prayer: Playgroup STARTS 8:30 – 10:30 Hall Open Afternoon 2.45pm-4:45pm	2 FEBRUARY	3 FEBRUARY Welcome back to SCHOOL MASS Presentation and announcement of 2022 Year 6 Student Ministries. 9:00am	4 FEBRUARY : P & F Function – Welcome back to St. Andrew's 4:00 – 6:30
5/6 FEB Week 2	7 FEBRUARY Support-A-Reader Parent training session 8:30-9:30am	8 FEBRUARY Staff Prayer Playgroup 8:30 – 10:30 Hall STAFF MEETING	9 FEBRUARY	10 FEBRUARY	11 FEBRUARY MJR Assembly
12/13 FEB Week 3	14 FEBRUARY	15 FEBRUARY Staff Prayer Playgroup 8:30 – 10:30 Hall STAFF MEETING	16 FEBRUARY ALL SACRAMENTS PARENT NIGHT CHURCH 6:00pm	17 FEBRUARY	18 FEBRUARY Yrs 1 -6 AQUA FUN DAY (Arena Joondalup)
19/20 FEB Week 4 Reconciliation Commitment Masses at Church all weekend masses	21 FEBRUARY	22 FEBRUARY Staff Prayer Playgroup 8:30 – 10:30 Hall Staff Meeting Reconciliation Workshop SACPS Hall 6.00pm	23 FEBRUARY	24 FEBRUARY	25 FEBRUARY MJR Assembly CARITAS TALK AT ASSMEBLY
26/27 FEB Week 5	28 FEBRUARY	1 MARCH Staff Prayer: Playgroup 8:30 – 10:30 Hal STAFF MEETING	2 MARCH Ash Wednesday Mass (6 B) Years 1-6. 8:50am	3 MARCH	4 MARCH Year 4 Merit Assembly (both classes)

5/6 MAR Week 6	7 MARCH LABOR DAY PUBLIC HOLIDAY	8 MARCH Staff Prayer: STAFF MEETING	9 MARCH	10 MARCH Year 6 Summer Lightning Carnival Kingsway Sporting Complex Change of Date! Reconciliation Retreat - SACPS	11 MARCH MERIT ASSEMBLY
12/13 MAR Week 7	14 MARCH	15 MARCH Staff Prayer Playgroup 8:30 – 10:30 Hall STAFF MEETING	16 MARCH Year 6 Camp @ Ern Halliday Camp Sorrento	17 MARCH Year 6 Camp @ Ern Halliday Campsite Sorrento Saint Patrick's Day Classroom Prayer	18 MARCH Year 6 Camp @ Ern Halliday Campsite Sorrento National Day of Action Against Bullying and Violence
19/20 MAR Week 8	21 MARCH Swimming Lessons (State Swim Joondalup) Finance Meeting Advisory Council	22 MARCH Swimming Lessons Staff Prayer Playgroup 8:30 – 10:30 Hall STAFF MEETING RECONCILIATION 6:00pm	23 MARCH Swimming Lessons Advisory Council Meeting	24 MARCH Swimming Lessons	25 MARCH Swimming Lessons
26/27 MAR Week 9	28 MARCH Swimming Lessons P & F Meeting 8:30am Staffroom	29 MARCH Swimming Lessons Staff Prayer STAFF MEETING	30 MARCH Swimming Lessons	31 MARCH Swimming Lessons LAST LESSON	1 APRIL Eucharist Retreat – all day – school hall BURSARY – Irene McCormack Secondary College Due to Mr Fontaine
2/3 APRIL Week 10 Palm Sunday is April 10 th	4 APRIL	5 APRIL Free Dress Gold Coin donation (Project Compassion) “When I grow up, I want to be”	6 APRIL LAST DAY OF TERM Easter Assembly EB Visit after assembly (Sam) 2:00pm Stations of the Cross / Last Supper – Year 5B	7 APRIL PUPIL FREE DAY STAFF RELIGIOUS RETREAT	8 APRIL PUPIL FREE DAY STAFF RELIGIOUS RETREAT

Good Friday falls within the school vacation – Friday 15th April.



ST ANDREW'S CATHOLIC PRIMARY SCHOOL ANNUAL FEE SCHEDULE FOR 2022

	TUITION FEES	BUILDING LEVY	TOTAL	ANNUAL TOTAL FOR
1st child	\$1,407.50	\$281.50	\$1,689.00	\$1,689.00
2nd child	\$1,128.00	-	\$1,128.00	\$2,815.00
3rd child	\$844.50	-	\$844.50	\$3,659.50
4th child	No Charge	-	nil	

KINDERGARTEN

	TUITION FEES	BUILDING LEVY	TOTAL
1st child	\$844.50	\$169.00	\$1,013.50
2nd child	\$875.50	-	\$875.50
3rd child	\$508.50	-	\$508.50
4th child	No Charge	-	\$0.00

The following charges will also appear on school fee account relevant to the level the student is in:

1	Amenities PP - Year 6	199.00
2	Amenities Kindergarten	158.00
3	Building Supplementation KG - Yr 6	48.50
4	Camp (\$350) and Graduation (\$160) (including Tshirt)	510.00
5	Cooking Charges - KG	10.00
6	ICT PP - Year 6	46.00
7	Insurance - KG - Yr 6	18.50
8	Performing Art Activity /Specialist Incursions	20.00
9	Family Life Program Yrs 5 & 6	10.00
10	Language Assessment - KG	85.00
11	OT Assessment PP	85.00
12	P & F Family Contribution PP - Year 6	100.00
13	P & F Family Contribution KG	60.00
14	Site Licences (Mangahigh, Nussy, Lexile, Maths Seeds, English Stars, Bug Club)	55.00
15	Spelling Year 1 - 6	5.00
16	Sacramental Programme Year 3, 4, 6	15.00
17	Swimming - Yr 1 - Yr 5 (Buses and entry to pool)	105.00

1. Fees will be issued February
2. Families will receive 5% discount off Tuition Fees if paid within 14 days.

There are a few payment facilities available:

- (i) Cash;
- (ii) Cheque to St Andrew's Catholic Primary School;
- (iii) Direct Debit (forms available from the office);
- (iv) B-Pay;
- (v) EFTPOS (No American Express or Diners Cards);



**ST ANDREW'S CATHOLIC PRIMARY SCHOOL
HEALTH CARE CARD
ANNUAL FEE SCHEDULE FOR 2022**

	TUITION FEES	BUILDING LEVY	TOTAL	ANNUAL TOTAL FOR
1st child	\$300.00	\$90.00	\$390.00	\$390.00
2nd child	\$240.00	-	\$240.00	\$630.00
3rd child	\$180.00	-	\$180.00	\$810.00
4th child	No Charge	-	nil	

KINDERGARTEN

	TUITION FEES	BUILDING LEVY	TOTAL
1st child	\$300.00	\$90.00	\$390.00
2nd child	\$240.00	-	\$240.00
3rd child	\$180.00	-	\$180.00
4th child	No Charge	-	\$0.00

The following charges will also appear on school fee account relevant to the level the student is in:

1	Amenities PP - Year 6	199.00
2	Amenities Kindergarten	158.00
3	Building Supplementation KG - Yr 6	48.50
4	Camp (\$350) and Graduation (\$160) (including Tshirt)	510.00
5	Cooking Charges - KG	10.00
6	ICT PP - Year 6	46.00
7	Insurance - KG - Yr 6	18.50
8	Performing Art Activity /Specialist Incursions	20.00
9	Family Life Program Yrs 5 & 6	10.00
10	Language Assessment - KG	85.00
11	OT Assessment PP	85.00
12	P & F Family Contribution PP - Year 6	100.00
13	P & F Family Contribution KG	60.00
14	Site Licences (Mangahigh, Nessy, Lexile, Maths Seeds, English Stars, Bug Club)	55.00
15	Spelling Year 1 - 6	5.00
16	Sacramental Programme Year 3, 4, 6	15.00
17	Swimming - Yr 1 - Yr 5 (Buses and entry to pool)	105.00

1. Fees will be issued February
2. Families will receive 5% discount off Tuition Fees if paid within 14 days.

There are a few payment facilities available.

- (i) Cash;
- (ii) Cheque to St Andrew's Catholic Primary School;
- (iii) Direct Debit (forms available from the office);
- (iv) B-Pay;
- (v) EFTPOS (No American Express or Diners Cards);



St Andrew's
CATHOLIC PRIMARY SCHOOL

Companions on the Journey

SUPPORT A READER FREE PARENT PROFESSIONAL DEVELOPMENT

YOUR CHILD AND OTHERS HOW TO READ

Dear Parents,

We believe that one of the most important skills we can teach children is to become confident and competent readers. Some children find it more difficult than others to acquire these skills and need a little extra help to become fluent, and to enjoy reading. In order to assist these children, our school implements a program called *Support-a-Reader*. The program is based on the philosophy that children who need additional assistance with the reading process, will benefit from daily support on a one-to-one basis with a trained parent/tutor.

We are seeking volunteers who may be interested in becoming tutors and who could spare one hour a week or more, to listen to children in the Junior Primary read. To become a tutor, you will need to attend a training session on **MONDAY 7th February @ 8:30am** in the school library. The session will outline the procedure to be used with the students each day. *It is expected that all parents who are on a reading roster in a Junior Primary class in 2022, would have this tutor accreditation.* The session will also give you strategies to use with your own children during home reading.

If you are interested in becoming a tutor or would like to repeat the training session this year, please come along on Monday morning.

If you have already completed the training session in previous years and you are able to assist again this year, please send me an email outlining your availability by **Monday 7th of February**. The Support-a-Reader Program will take place on Monday, Tuesday and Thursday mornings this year.

Your assistance is a wonderful gift to the students at Saint Andrew's Catholic Primary School.

Kindest Regards,

Jo Ann Dennis
Student Support Teacher



KEEPING SAFE: CHILD PROTECTION CURRICULUM

Dear Parent/Caregiver,

At St Andrew's Catholic Primary school, all students participate in Keeping Safe: Child Protection Curriculum lessons. Keeping Safe is an evidence based, highly regarded, best practice curriculum which has been developed collaboratively with child protection specialists, teachers, educational leaders and other professionals. Keeping Safe covers a range of topics including new material on current issues such as bullying and cyber safety.

The Keeping Safe: Child Protection Curriculum is divided into 5 documents specific to the year level of the students. The curriculum across each of the year levels addresses the same main themes and focus areas appropriate to the developmental level of the children.

The 2 main themes are:

- We all have the right to be safe
- We can help ourselves to be safe by talking to people we trust

The 4 focus areas are:

- The right to be safe
- Relationships
- Recognising and reporting abuse
- Protective strategies

Further information about the implementation of the *Keeping Safe: Child Protection Curriculum* at St Andrew's Catholic Primary school will be shared with parents/carers through the year.

More information can be found on the Catholic Education Western Australia site:

Child Safe Framework – CEWA

<https://www.cewa.edu.au/our-schools/key-initiatives/child-safe-framework/>

Please contact your classroom teacher or Mrs Allen or Mrs Parrotte (Year2 Teachers) (Keeping Safe: SACPC co-ordinators) if you have any questions about the program.

ST ANDREW'S CATHOLIC PRIMARY SCHOOL



Term 1 and 2 - 2022

Online ordering is with QuickClik.
Lunch bags are provided only when
you order on-line.

St Andrew's Catholic Primary School
Term 1 and 2
2022 Menu
Order online at Quick-Clig

Recess Counter Sales. Change daily

\$1.00	Cookies
60c	Pikelets
\$1.20	Cheesy
\$1.20	Popcorn
\$1.30	Snacks bags
\$1.00	Fruit Icy Stick
\$1.00	Slushies

Lunch Counter sales. Change daily

\$1.00	Cookies
60c	Pikelets
\$1.20	Popcorn
\$1.30	Snacks bags
\$1.00	Fruit Icy Stick
\$1.00	Slushies

Please understand that some products may not be available because of no stock from the canteen suppliers and COVID-19.

Please be assured that the canteen will provide a substitute where we can.

Sorry for any inconvenience.

This year, due to one use plastic containers being removed from the school canteens, the canteen will be only using biodegradable or cardboard containers.

The canteen will also not be selling water bottles.

Thanks

Canteen

Term 1 & 2 2022 Monday & Wednesday Meals

\$5.50	2 x Chicken Strips Bento Box Muffin Fruit & Veg (Sorry no changes)
\$5.	Hot Chicken Roll
\$4.	Pizza Ham & Pineapple
\$5.	Meatball Sub Cheese & Sauce
\$5.	Hotdog with Sauce
\$5.50	Chicken Salad wrap
\$4.	*Spinach & Ricotta Roll
\$5.50	*Mac Cheeses <u>Gluten Free</u>

Friday Meals

\$5.00	Eagles Burger Chicken Lettuce & Mayo
\$5.00	Docker's Burger Beef, Chesses & Sauce
\$5.00	Perth Wildcats Fish Burger Fish, Lettuce & Mayo
\$5.50	Chicken Salad wrap
\$5.	Meat Pie
\$4.	Sausage Roll
60c	Tomato Sauce Portion
\$4.	*Spinach & Ricotta Roll
\$5.50	*Mac Cheeses <u>Gluten Free</u>

***Vegetarian or Gluten Free**

Monday, Wednesday and Friday

<u>Sandwiches</u>	<u>Roll</u>
Vegemite \$3.	\$3.60
Cheese \$4.	\$4.60
Egg \$3.	\$4.60
Ham \$5.	\$5.60
Chicken \$5.	\$5.60
Tuna \$5.	\$5.60
Salad (Lettuce, Tomato & Cucumber)	

Toasted Sandwiches

Simply Cheese	\$4.
Vegemite & Cheese	\$3.
Ham & Cheese	\$5.
Ham, Cheese & Tomato	\$5.
Chicken & Cheese	\$5.
Tuna	\$5.

Sandwiches

Cheese & Salad	\$6.
Ham & Salad	\$6.
Chicken & Salad	\$6.
Tuna & Salad	\$6.

Drinks

\$2.50	Juice Bomb (100% fruit juice)	Raspberry, Watermelon or Grape
\$2.50	Glee (99% fruit juice)	Tropical
\$2.50	Master's M Milk	Chocolate
\$1.60	Juice Box	Paradise Punch

Please understand that some products may not be available because of no stock from the canteen suppliers and COVID -19.

Please be assured that the canteen will provide a substitute where we can.

Did you know?

- We use 97% fat free chicken meat and low-fat cheese.
- We promote healthy food eating guidelines and follow the Star Choice Canteen Awards, National Heart Foundation and the Canteen Traffic Light Healthy Food Guidelines.
- All foods are low in fat and salt.

Please note orders after 9.00am, incorrect orders or teacher's note will be given a cheese sandwich at the cost of \$3.10 for sandwich and lunch bag. If the money for your child's lunch order is insufficient, an alternate lunch will be provided to suit the money enclosed. Outstanding accounts will be sent a note home to families. When placing a cash lunch order, you must supply a lunch order bag and correct money.

PROCEDURE FOR ORDERING LUNCHES (All orders must be in by 9:00am)

Could you please include your child's name, class (blue or white) and order on the front of your lunch bag along with the correct money. Thank you.

Bags are available from the Canteen for \$1.00 for 10 bags or 10c each bag.

10c will be charged if lunch order is not on a bag.

Could you please fold the bag (no staples or tape) and if you wish to wrap the money please just wrap in tissue (not cling wrap or foil). Each family member must have their own lunch bag.

If money is placed in the oldest family member's bag, please write on the other child's bag, the name and class (blue or white) of the child with the money. If a child who has ordered lunch goes home sick it is up to the parent to notify the Canteen by 9.00am so that a refund can be given.

HEALTHY EATING

We only use wholemeal bread. Where possible we use low fat and low salt products and those approved by the Canteen Association and the Heart Foundation.

CANTEEN VOLUNTEERS

Volunteers are always welcome and are vital to the operation of the Canteen—without your help the canteen could not operate. If you can spare some time, we'd love to hear from you.

ON-LINE ORDERING with QuickCliq.

Brochures are available from the canteen or front office.

Lunch bags are provided only when ordering on-line.

Maria Cross

Canteen Manageress

P&F NEWS

Please join the P&F St Andrew's Facebook
standrewsparentsandfriends@gmail.com

SAY HI TO YOUR P&F COMMITTEE:

(L-R) is: Melissa Morris (Vice President) Katie Canzirri (President) Krystina Stroppek (Treasurer) and Joanne Webber (Secretary). Say hi if you see us around the grounds!



FIRST MEETING FOR 2022

The P&F held its first meeting for the year on the first day back and it was so great to see some new faces! So much cool stuff is happening this year including, of course, the welcome back event this Friday, the Easter raffle, Mother's Day raffle and the new adventure playground equipment unveiled on Monday, along with loads more we can't confirm just yet....

NEXT MEETING

Plan ahead now so you can join us and hear about developments around your school: Monday 28th March in the staffroom straight after drop off (8.30am).

BUSY TIMES

Terms 1 and 2 are very busy for events so keep an eye on the [St Andrew's Clarkson CPS P&F Group](#) Facebook page. You can also contact us on email standrewsparentsandfriends@gmail.com if you want to ask any questions.

Wishing you all a great year ahead!

We are excited to see as many families attend tomorrow night's "Welcome Back to School" function – An evening on the Green. 4:00pm – 6:30pm.



*St Andrew's
Catholic Primary School
P&F
invites you to:*

WELCOME BACK 2022

Friday 4 February 4pm - 6.30pm

- Animal farm
- Bubble entertainment
- Face painting
- Food trucks

Bring a blanket or
chairs, your own picnic
and **your mask**
(in case social distancing
cannot be maintained)



Please note: all vendors will be double vaxxed



We are all so excited about our new additions to the Nature Scape, Adventure playground. We have purchased a train and an aeroplane for the children to enjoy.



PARISH NEWS

St Andrew's Catholic Church Clarkson



For all Mass times and parish information please follow the following link.

clarkson.perthcatholic.org.au

COMMUNITY NEWS



PERM-A-PLEAT SCHOOLWEAR
Retail Shop



St Andrew's Catholic
Primary School

PERM-A-PLEAT – ST ANDREW'S ONLINE UNIFORM STORE

Most of our uniforms have been taken back to Perm-a-Pleat. You will be able to order directly from them which will be delivered to your home address. You will find the Perm-a-Pleat / St Andrew's Retail Shop access button on our webpage. There are instructions on "How to Order" on the right-hand side of page. From 2022 the Uniform office will be opened on Friday mornings from 8.00am to 9.00am for anyone who would like to try on the sample stock.

Below is the link to the Online Uniform Store:

<https://standrewscatholicps.permapleat.com.au/shop/>



ST ANDREW'S
Catholic Primary School

Standard Collection Notice: publicity and the use of student images

Dear Parent/Guardian

As part of the school's activities there may, on occasion, arise the situation whereby St Andrew's Catholic Primary School, Catholic Education Western Australia (CEWA) or local media will need to take photographs and/or video footage of your child/ren for publication in classrooms, newspapers, school newsletters, CEWA documents, training videos, the St. Andrew's CPS/CEWA website and/or St. Andrew's CPS social media. An agreement giving parental permission is required for the publishing of these.

Should you wish to alter this agreement at any time, please let the school office know in writing.

Please complete the information below and return it to the school office, via the classroom teacher. Please complete a form for each child.

I, _____

Parent/Guardian of _____

Do hereby give permission for the use of my son's/daughter's photo/video image in the above listed activities.

Signed: _____ Date: _____

Child's class: Year _____